



# Tornado Recovery

## Lessons Learned

.....

Lee Spencer, Director of Recovery  
Manitoba Emergency Measures  
Organization

DRIE (C) Winter Lunch Session

Norwood Hotel, February 22, 2008



# Outline

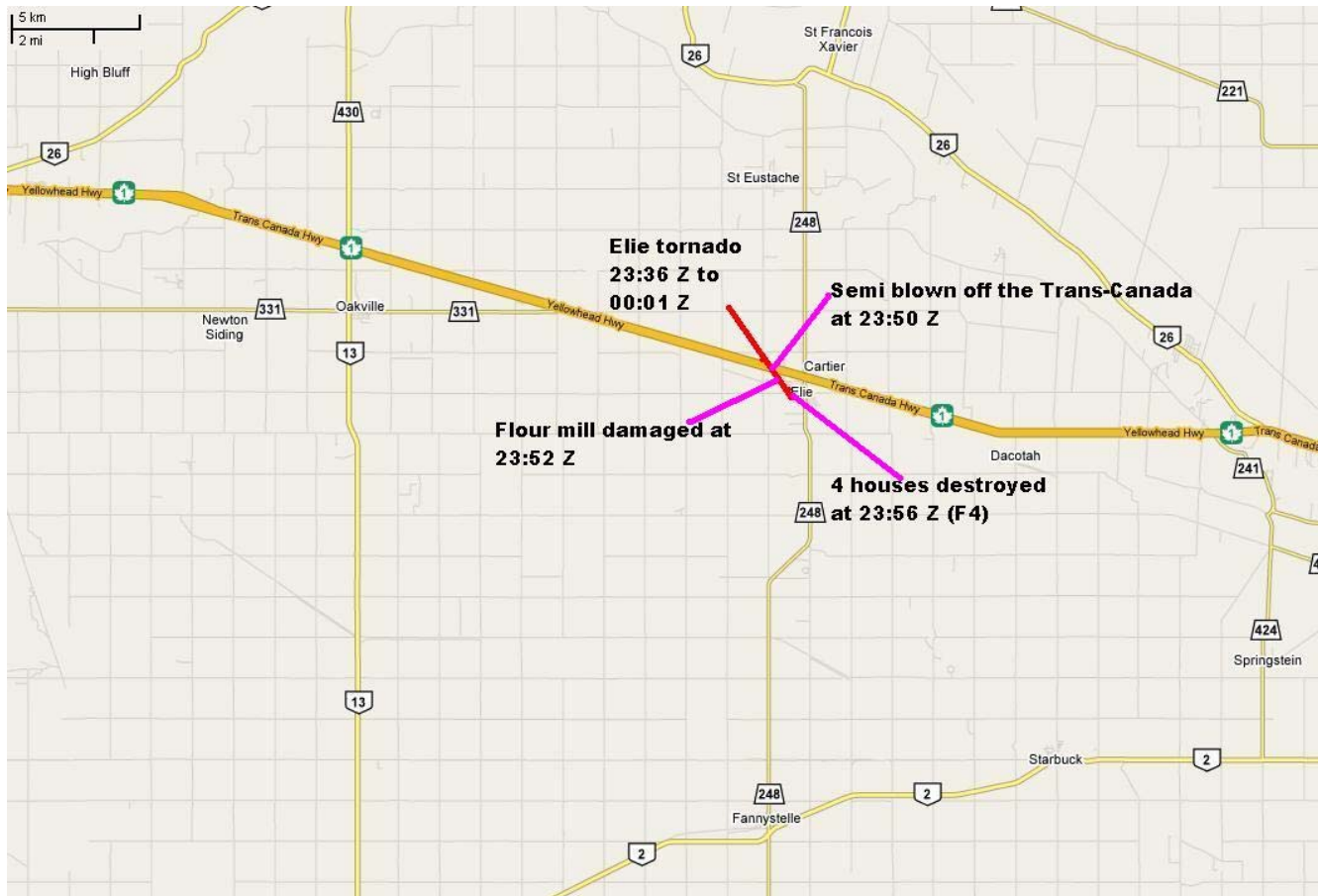
- Background
- Recovery overview
- Lessons Identified
  - Community Resiliency
  - Psycho-social
  - Disaster Financial Assistance
- Conclusion





EMO/DRIE Central Lunch

# Elie



EMO/DRIE Central Lunch

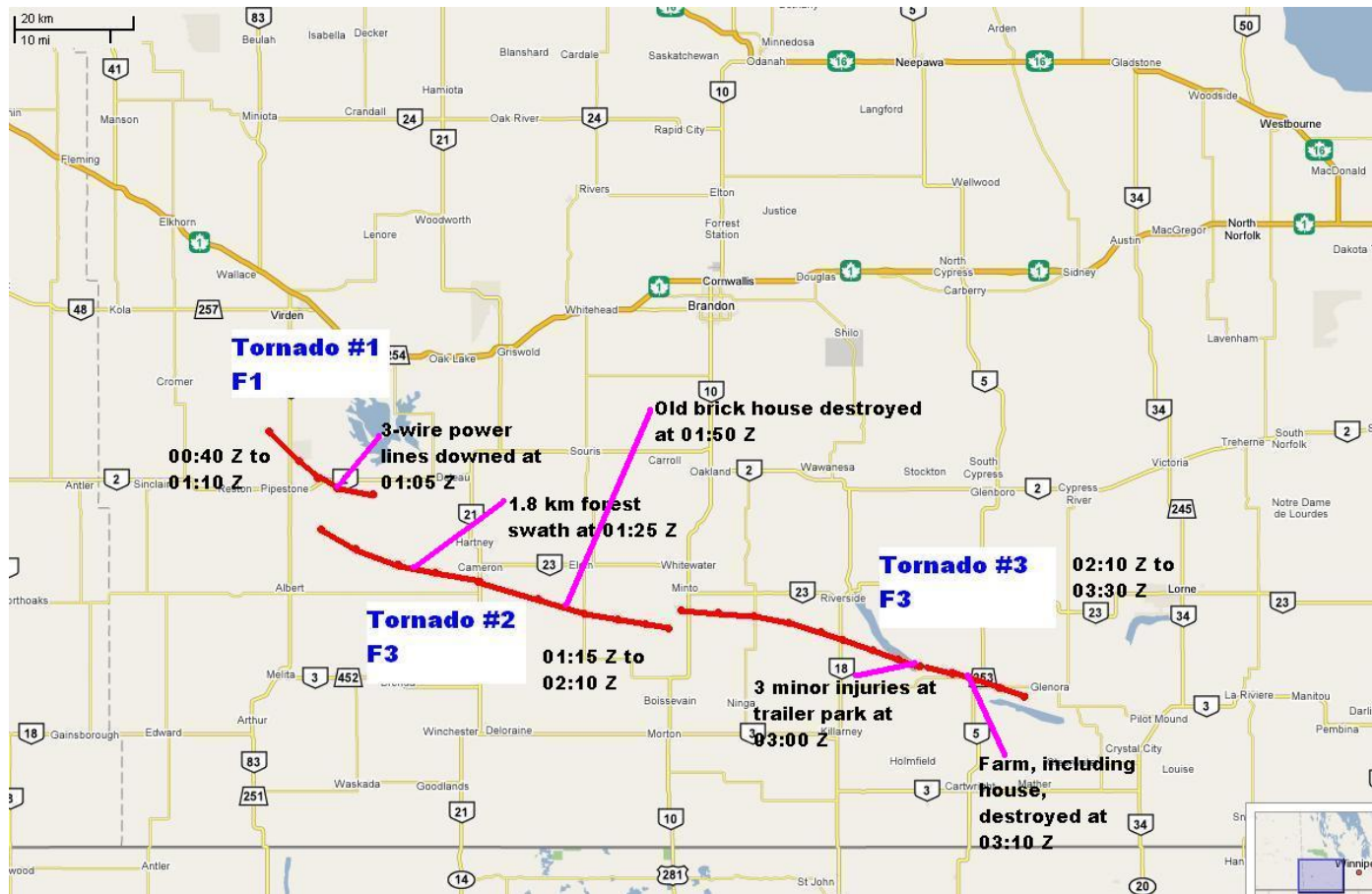
# ELIE



EMO/DRIE Central Lunch



# Western Manitoba



# Western Manitoba

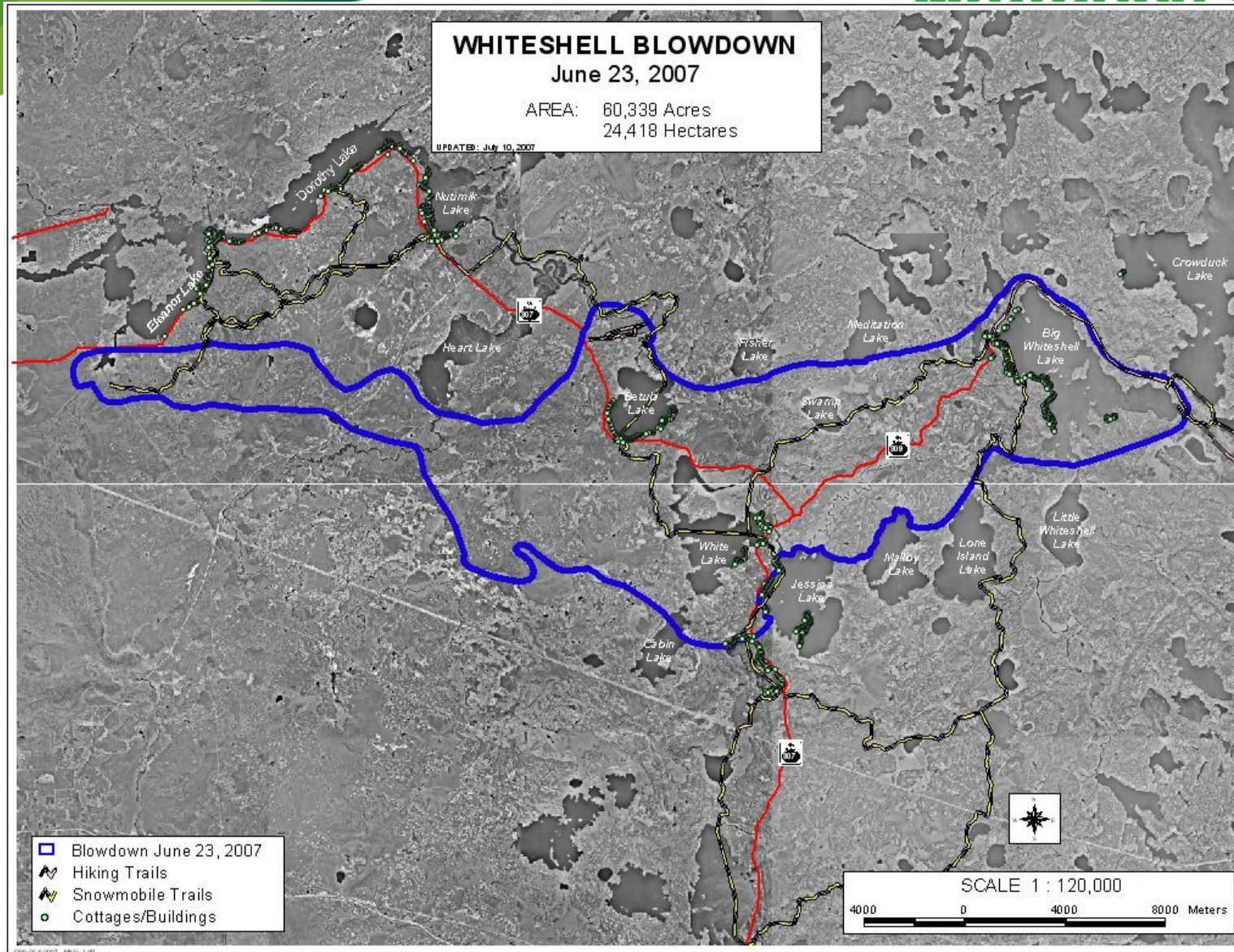


EMO/DRIE Central Lunch

## Background

- On June 22, Canada's 1<sup>st</sup> F5 Tornado strikes Elie destroying four homes and damaging dozens of other homes
- During the night of June 23/24 three tornado cut a swath across western Manitoba from Pipestone to Glenora destroying one house and damaging over 120 farms
- During the night of June 23/24 a severe wind storm with reported funnel clouds hammered the Whiteshell, downing over 500,000 m<sup>3</sup> of timber and knocking out power to a wide region.





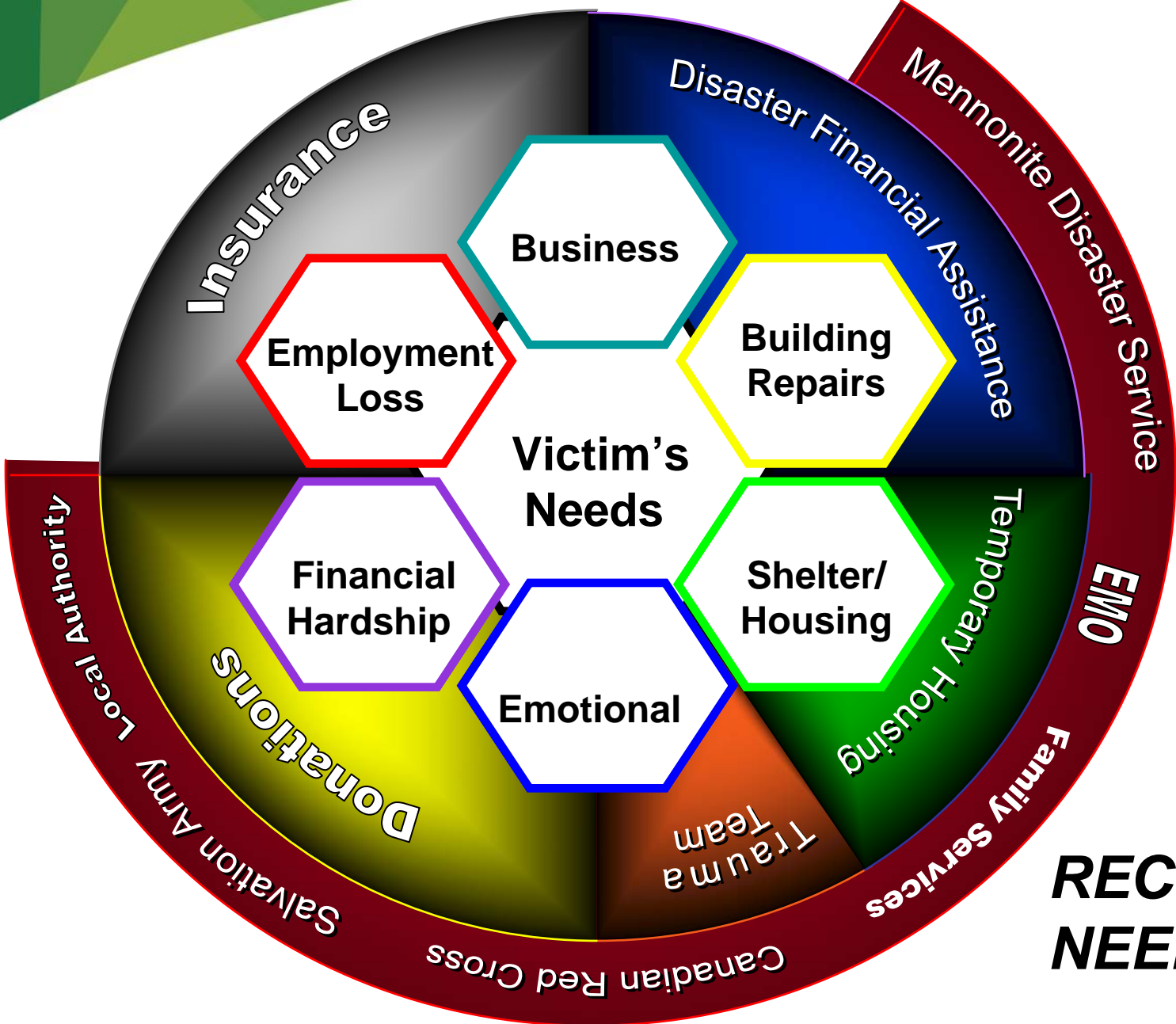
EMO/DRIE Central Lunch

# Recovery Overview

- Victim's needs
  - Emergency housing
  - Income continuation
  - Reconstruction
  - Emotional support
- Recovery Agencies
  - Local Authority
  - NGOs
  - Provincial Government
    - Family Services
    - EMO
    - RHA
  - Insurance providers

# Recovery Overview Continued

- Recovery resources
  - Mental Health Trauma teams
  - Family Services temporary shelter
  - DFA
  - Insurance advances and temporary shelter
  - Local volunteers
  - Donations (fund raising)
  - NGO (volunteers, donations of materials and money)



**RECOVERY  
NEEDS**

# Lessons Identified - General

- Provincially our local authorities are well prepared to respond.
- We need a more all hazard approach as we tend to be flood and wild fire focused.
- Public education
  - There is a very fine line between making a youtube video and starring on youtube!

# Specific Lessons - Health Services

- Psychological sense of normalcy
  - Re-entry in a tornado zone much different than flood
- Determine and prioritize all who were affected
  - The need to balance medical advise against the needs of victims to be engaged
- Emotional and physical needs of community
  - Public meetings
  - Community engagement of psycho-social agencies
- Ongoing assessment of community needs
  - Long term psycho-social impacts

# Specific Lessons - DFA

- Most large scale DFA has been flood focused
  - Need to build data base of other hazards
- Some financial recovery must be centrally led due to synergy issues
  - Wooded pasture
- Insurance while widely subscribed for homes is not always taken for business/farm
  - Fence lines
  - Farming structures

# Specific Lessons - People

- Neighbor helping neighbor
- Generosity and kindness
- Volunteers will come from all over
  - Local authority plays a role in community volunteer efforts (safety)
- NGO's
  - Continue to be a valuable resource for victims
- Local authority's role with donation distribution

# Specific Lesson – Local Authority

- Local authority plans are well prepared and deal with response
  - Recovery tends to be overlooked
    - Community Recovery Working Groups
    - Public Meetings
- Media
- Redundancy
- Awareness in rural areas

# Conclusion

Lee Spencer – Director of  
Recovery