

2008 ANNUAL CONFERENCE

Workshop:
October 30, 2008

AGM & Conference:
October 31, 2008

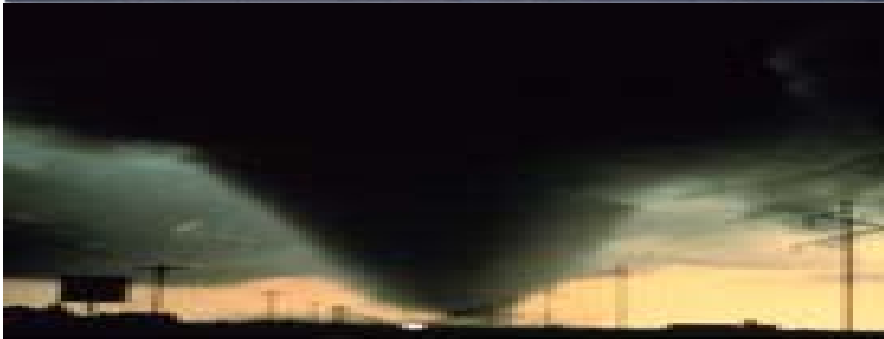


Bridge Image: I-35W Bridge Collapse, Minneapolis, MN, August 1, 2007. Released into the public domain by its author, Tom Ruen at the English Wikipedia project.



Flood Image: Winnipeg flood, 1997. Source unknown.

Tornado Image: Public Domain photo of June 2, 1995 Dimmit, TX tornado courtesy of NOAA Photo Library, NOAA Central Library; OAR/ERL/National Severe Storms Laboratory (NSSL), photographed by Harald Richter



LOCATION:
Canad Inns Polo Park
1405 St. Matthews Avenue
Winnipeg, Manitoba

GOLD SPONSOR(s)

SILVER SPONSOR(s)

BRONZE SPONSOR(s)





The Conference

DRIE Central is proud to host our 9th Annual Conference.

The Disaster Recovery Information Exchange (DRIE) – Central Chapter provides a medium at the local level, in Manitoba, where members can exchange ideas, experiences, information and keep abreast of developments relating to business disaster mitigation, preparedness, response, and recovery.

This year we feature:

A pre-conference workshop on October 30th and a full program of speakers on October 31st.

- Learn from the experts.
- Share experiences with others.
- Meet other disaster and continuity management professionals

Register for this event today.

LOCATION

**Canad Inns Polo Park
1405 St. Matthews Avenue
Telephone: (204) 775-8791
<http://www.canadinns.com>**

Provide workshop and conference name and date for special discounted room rate.



DISASTER RECOVERY INFORMATION EXCHANGE CENTRAL CHAPTER

Pre-Conference workshop

Facilitator: *Graeme Jannaway, DRI Canada*

Room: *Ambassador K*

Thursday October 30, 2008

Pre-conference Workshop facilitated by Disaster Recovery Institute Canada (www.dri.ca)

Graeme Jannaway presents Business Continuity Awareness – BCA 100. This fast paced lecture style course provides a full day overview of the DRI methodology and best practices related to the implementation of a business continuity program. Participants will receive a high level overview of the standard methodology and best practices used to implement a comprehensive business continuity program. However this one day session is not intended to provide sufficient knowledge to be proficient in plan creation nor is it a review for the DRI certification examination. It is best used to create awareness of the requirements for a business continuity program and is quite helpful for employees who will have an indirect or ancillary role in the development and maintenance of business continuity plans. Plan coordinators having a more active role in the development and maintenance process should consider either the BCLE 1000 or 2000 education programs. A complete summary of the course can be viewed here <http://www.dri.ca/EDUCATION/courses.asp#BCA100>.

8:30 AM to 9:00AM – Registration & Continental Breakfast

9:00 AM to Noon – Session

Noon to 1:00PM – Lunch (provided)

1:00PM to 4:00PM – Session continued

Bio: Graeme Jannaway graduated from the University of Toronto in 1976 with a B.Sc. in Computer Science and Geology. Since that time he has worked in business continuity and information technology in companies such as Confederation Life, New York Life, Toronto Stock Exchange, AT&T Canada, ScotiaBank and BMO Nesbitt Burns. In 1986 he began to focus on information security, business continuity planning, risk management and information systems audit. He has worked as both a consultant and auditor for Deloitte & Touche. Since 1999 he has been independent consultant.

Mr. Jannaway is a

- Certified Information Systems Auditor (CISA),
- Certified Business Continuity Planner (CBCP)
- Master Fellow of the Life Management Institute (FLMI/M).

He is

- Head of Delegation for Canada to the ISO Technical Committee on Societal Security (ISO/TC 223)
- Chair, Canadian Standards Association / Public Safety & Emergency Preparedness Canada Emergency Management / Business Continuity Planning Technical Committee
- Principal Member of the National Fire Prevention Association Technical Committee on Disaster/Emergency Management and Business Continuity (NFPA 1600);
- Member of the Emergency Management Ontario Doctrine and Standards Committee of;
- Member of the Disaster Resource Guide Advisory Board;
- Immediate Past President & Chairman of the Board of the Disaster Recovery Institute Canada;
- Immediate Past President of the Toronto Chapter of the Disaster Recovery Information Exchange
- Former Director of the DRI International.

Mr. Jannaway has been interviewed by the CBC, featured in Report on Business and is listed in Who's Who in Canada. He has consulted and lectured extensively in Canada, the United States and Europe in the areas of business continuity planning, risk management, information security and white-collar crime. Since 1995, he has taught the Availability Section of the Information Systems Audit and Control Association (Toronto Chapter) Certified Information Systems Auditor preparation course and is a DRI International instructor.

Target Audience: Managers, their backups and potential senior representatives who require the knowledge and practical application to prepare and implement a Business Continuity Program.



**DISASTER RECOVERY INFORMATION EXCHANGE
CENTRAL CHAPTER**

Conference Agenda – October 31, 2008 (subject to last minute changes)

Room	AMBASSADOR 1	AMBASSADOR D	AMBASSADOR G
Time			
08:00 – 08:45	Registration & Breakfast		
08:45 – 9:45	Keynote Wes Shoemaker <i>Emergency Management Planning for Major Events</i>		
9:45 – 10:00	Refreshment Break		
10:00 – 11:00	Keynote Stephen Piggott <i>Business Continuity/Disaster Recovery: Trends & Directions</i>		
11:00 – 12:00	Breakout Brian Kayes <i>Refuge from the Smoke & Fire – Two Events, Three Communities</i>	Breakout John Lindsay <i>New CSA Z1600 Standard on Emergency Management and Business Continuity</i>	Breakout Chris Dunn <i>Data Center Resiliency - Beyond IT Disaster Recovery</i>
12:00 – 12:45	Lunch & Annual General Meeting		
12:45 – 1:45	Workshop Graeme Jannaway <i>BCP for Executives (BCLE 250)</i>	Breakout Debora Durnin-Richards <i>Anyone Hungry Yet?</i>	Breakout Daniel Zellman <i>Project Management Approach to Disaster Response</i>
1:45 – 2:00	Refreshment Break		
2:00 – 3:00	Workshop (Cont'd) Graeme Jannaway <i>BCP for Executives (BCLE 250)</i>	Breakout Meredith Daun & Larry Skoglund <i>Community Recovery from the Elie Tornado</i>	Breakout Terri Fisette <i>A Suspicious Package</i>
3:00 – 3:15	Closing Address & Prize Draw		

Conference Sessions – October 31, 2008



Emergency Management Planning for Major Events

Keynote Speaker – Wes Shoemaker
Government of British Columbia

Moderator: Randy Hull

Topic: The objective of this session is to highlight some of the emergency management activities and initiatives that are being implemented in preparation for both the 2009 World Police & Fire Games and the 2010 Olympic and Paralympic Games in Vancouver. In addition, the session will focus on the integration of business continuity planning within the BC Emergency Management Response System (BCERMS).

Bio: Wes Shoemaker is Associate Deputy Minister with Emergency Management BC. Mr. Shoemaker left his position as Chief of Winnipeg Fire Paramedic Service in 2006, and will be travelling to Winnipeg to discuss his activities preparing for the 2010 Olympics in Vancouver.



Business Continuity/Disaster Recovery: Trends & Directions

Keynote Speaker – Stephen Piggott
Sunguard

Moderator: Joe Krupnik

Topic: Our industry continues to evolve at a rapid pace. Diverse companies across all industry verticals are evaluating, developing and refining tiered recovery strategies across the enterprise. Senior executives are increasingly challenged to develop, fund and sustain demonstrative, executable programs that answer the following questions:

“Am I restorable, recoverable or available?”

“What are the material differences between internal, commercial and hybrid strategy solutions?”

“What should we be spending on tiered recoverability?”

A significant challenge is in understanding what the costs should be for enterprise recoverability and securing the requisite funding and resources for program execution. Addressing these issues requires a focus on defining the actual costs and risks associated with the myriad of tiered solutions available to customers of every industry, shape and size.

This session will provide insights and examples into the defined cost (hard and soft criteria) definitions, used by your peers, for deducing the comparative cost analysis of internal, commercial and hybrid solutions and the relative ‘pro’s and con’s associated with the decision making process.

If you need answers to any of the following questions, this session is geared to your participation:

- What are the criteria required to compare and contrast the differences between internal, commercial and



DISASTER RECOVERY INFORMATION EXCHANGE CENTRAL CHAPTER

- hybrid solutions?
- o What are the business centric focal points I can use to compare and contrast decision criteria at my organization?
- o What are the 'roadmap' alternatives available to my organization to make, cost effective and timely progress towards, executable, tiered recoverability?

Bio: Stephen C. Piggott, Vice President, Strategic Accounts, has been involved with business continuity program development for over 20 years, the past fifteen with SunGard Availability Services in both the professional services and sales organizations. Steve has developed business continuity programs for Fortune 500 companies across diverse industries and has participated in numerous customer declared disaster recovery efforts.

Steve's responsibilities encompass select customers across North America. Steve's primary focus is to interface with customer 'C' level officers and senior business managers as a trusted advisor. Steve provides insight into current industry trends and directions, evolving practices and methodologies and correlates specific business requirements to the appropriate suite of SunGard's Information Availability services and products.

Steve develops internal, commercial and hybrid business continuity programs and works with customers executive teams and respective business and technology partners relative to crafting customized, customer centric solutions.

Steve's 'hands on' experience in solution design, sales and service delivery, affords a unique level of industry credibility and experience.

Refuge from the Smoke and Fire - Two events, Three Communities

Speaker: Brian Kayes
City of Brandon

Moderator: Paul Anderson

Topic: Refuge from the Smoke and Fire - Two events, Three Communities Brandon Manitoba has provided northern Manitoba forest fire evacuees with a temporary place to stay for the past two summers. Brian Kayes will review the challenges and differences associated with operating a single reception centre for one community and managing multiple locations for two communities.

Bio: Brian Kayes began his career in emergency planning in the health sector in 1988. He joined the City of Brandon in 1995 and is now the Director of Emergency Coordination. Brian has a certificate in Occupational Health & Safety from the University of Manitoba, a Bachelor of Arts from Brandon University and a Master of Rural Development degree from Brandon University. Brian believes everyone has a role to play in managing emergencies and sees public awareness as a key element in any emergency preparedness program.

Overview of the new CSA Z1600 Standard on Emergency Management and Business Continuity

Speaker: John Lindsay
Brandon University

Moderator: Heather Sorko

Topic: Overview of the new CSA Z1600 Standard on Emergency Management and Business Continuity



DISASTER RECOVERY INFORMATION EXCHANGE CENTRAL CHAPTER

Bio: John Lindsay is currently an Assistant Professor and Chair in the Applied Disaster and Emergency Studies department at Brandon University where he combines research with his 17 years of experience in emergency management. John worked in New Zealand for six years, first as a hazard analyst in Wellington and then managing the Auckland City Council emergency management program. He returned to Canada, joining Manitoba Health as a disaster management specialist from 1999 to 2005. He has taught at Brandon University since 2001 and has also served as an instructor at the University of Manitoba's Natural Resources Institute. John received the degree of Master of City Planning from the University of Manitoba in 1993 with a research focus on urban planning and emergency management. John contributes to the disaster management profession through research and at numerous conferences as both an organizer and speaker. He is a member of the CSA Technical Committee on Emergency Management and served on the NSERC Safety and Security Grant selection panel.

Data Center Resiliency - Beyond IT Disaster Recovery

Speaker: *Chris Dunn, Deloitte*

Moderator: *Jeff Franz-Lien*

Topic: Traditional thinking says that we need a plan in place to recover from IT disasters, but what if you could maintain the continuity of operations despite not only a catastrophe but during events that occur much more frequently such as component-level disruptions?

Bio: Chris H. Dunn is presently a Senior Manager in the Enterprise Risk (ERs) group of the Winnipeg Office of Deloitte and provides Control Assurance and Security Services to a wide variety of businesses. He is currently focused on providing IT Governance and Business Continuity services to our clients. Mr. Dunn has experience assessing and developing enterprise wide controls including business continuity and disaster recovery plans.

DR Project Management

Speaker: *Daniel Zellman,
Winnipeg Regional Health Authority*

Moderator: *Paul Anderson*

Topic: A Project Management Approach to Disaster Response.

Bio: Daniel Zellman is a project manager with the Project Management Office (PMO) of the Winnipeg Regional Health Authority (WRHA). Prior to joining the WRHA PMO earlier this year, Daniel spent six years working and volunteering for the American and Canadian Red Cross societies. He was involved in the American Red Cross response to the September 11, 2001, attacks on the World Trade Center - first coordinating one of several domestic financial assistance programs, and then managing the 9.11 International Family Assistance Program (IFAP) - as well as the 2004 Florida hurricanes. Subsequently, he served as a Disaster Recovery policy consultant to the Canadian Red Cross National Disaster Management Office before becoming Disaster Management Coordinator for the Manitoba Region.



Anyone hungry yet?

Speaker: *Debora Durnin-Richards, PHEc,*
Manitoba Agriculture, Food and Rural Initiatives

Moderator: *Heather Sorko*

Topic: Planning a response to a critical food shortage emergency.

Bio: Debora is a professional Home Economist and has worked for the government of Manitoba for over 30 years. She is currently A/Director for Boards, Commissions and Legislation. This technical area of agricultural legislation, regulation and the supply managed farm sector is new for Debora and adds to a career that is diverse, challenging and very rewarding. She has enjoyed numerous job opportunities including extension education, policy analysis, program development, management and leadership in a number of technical areas. Some of these include home economics, 4-H and youth, crop insurance, northern food systems, marketing and strategic planning. As the department of Agriculture, Food and Rural Initiatives' Emergency Management Coordinator, Debora has been instrumental in developing the department's business continuity plan and in facilitating the department's work in emergency response planning. She is pleased to have this opportunity to interact with emergency planners today and discuss the complexity of planning a response to a critical food shortage emergency.

BIA Training Workshop – Business Continuity for Executives

Speaker: *Graeme Jannaway*

Moderator: *Brock Holowachuk*

Topic: This fast paced dialogue style seminar is facilitated by a senior certified instructor or a DRI CANADA executive. The content is a specific overview of the Disaster Recovery Institute's development methodology and best practices related to the implementation of a business continuity program; also known as a Continuity Of Operations Program (COOP).

Bio: Graeme Jannaway graduated from the University of Toronto in 1976 with a B.Sc. in Computer Science and Geology. Since that time he has worked in business continuity and information technology in companies such as Confederation Life, New York Life, Toronto Stock Exchange, AT&T Canada, ScotiaBank and BMO Nesbitt Burns. In 1986 he began to focus on information security, business continuity planning, risk management and information systems audit. He has worked as both a consultant and auditor for Deloitte & Touche. Since 1999 he has been independent consultant.



Community Recovery from the Elie Tornado

Speakers: *Meredith Daun,*
Manitoba Family Services and Housing

Larry Skoglund; C.I.M., P. Mgr.
Disaster Management Officer
Regional Health Authority - Central Manitoba Inc.

Moderator: *Jeff Franz-Lien*

Topic: Community recovery from the Elie tornado.

Bio: Meredith has worked for the Province of Manitoba for the past 4 years. Currently she is a Community Services Worker for people with intellectual disabilities. One of her duties is to act as the Emergency Social Services Coordinator for Central Region. She has held this responsibility for 2 and a half years and has assisted with the response of 3 separate Emergencies. Prior to working with the provincial government, Meredith has worked in a personal care home, home care services and as an intern with the UNHCR in West Africa. In her free time, she is a coordinator for the Manitoba Campaign to Ban Landmines. Meredith holds a BA in International Development Studies from the U of W and a BSW from the U of M. She is currently completing her MSW from the U of M specializing in the rights of people with disabilities.

Bio: Larry has worked as the Disaster Management Officer for Regional Health Authority Central MB Inc in a full time position since 2006. Larry has however, been involved in Disaster Management for the past 20 years and has been involved in the Red River Flood of the Century as well as the several floods that have occurred before and after, the Firdale Train De-railment, Anhydrous spills, numerous highway crashes and has conducted many table top exercises and mock events. His role with RHA Central is to train, develop support materials and manuals, and advise the Regional Operation Centre should a significant event occur. Larry has his Certificate in Management as well as several other certificates relating to Disaster Preparedness and Response through Emergency Measures, the Office of the Fire Commissioner and the Justice Institute of British Columbia.

Dealing with Suspicious Packages – Lesson learned from the Winnipeg Tax Centre

Speaker: *Terri Fisette,*
Canada Revenue Agency

Moderator: *Joe Krupnik*

Topic: May 2008 suspicious package and hazmat response at their Lagimodiere office.

Bio: Terri Fisette is the Manager of Revenue Processing at the Winnipeg Tax Centre, Canada Revenue Agency. She is responsible for the delivery of programs related to payment processing and mail operations with a staffing complement ranging from 80 to over 400 employees throughout the year. Her past work has included serving as the Corporate Services Manager reporting to the Director and various positions with the Appeals, Client Services, and Individual Returns programs. Terri is actively involved in Employment Equity initiatives within the CRA through her role as local Employment Equity coordinator. Born in Saskatoon, Terri and her husband reside in Winnipeg and have two young children.



**DISASTER RECOVERY INFORMATION EXCHANGE
CENTRAL CHAPTER**

Fees

Membership

Membership Renewal or New Member Registration for 2008/2009	\$50
<p>Membership includes free attendance to the 2009 conference and three luncheon speaker sessions (with lunch provided) over the next year as well as select email distributions of disaster recovery and business continuity information during the year.</p>	

Workshop, Oct 30, 2008

Current Member or registering for New Membership	\$75
Student (non member)	\$15
Non-Members (Not a Member and not registering for New Membership)	\$100
<p>Workshop fees include continental breakfast, coffee breaks, buffet lunch and all session materials. Refunds will not be provided, however registrations are transferable.</p>	

Conference, Oct 31, 2008

2007/2008 Current Members	No charge
Student (non member)	\$15
New Members (Registering for Nov. 1/08 – Oct. 31/09 year)	\$50
Non-Members (Not a Member and not registering for New Membership)	\$75
<p>Conference fees include full breakfast, coffee breaks, buffet lunch and all session materials. Refunds will not be provided, however registrations are transferable.</p>	

Fee examples:

If you are renewing your membership, attending the conference and workshop.	Membership Renewal	\$50
	Conference	\$0
	Workshop	\$75
	Total	\$125
If you are signing up to be a new member and attending the conference and workshop.	New Membership	\$50
	Conference	\$50
	Workshop	\$100
	Total	\$200
If you do not wish to be a member but sign up to attend the conference and workshop.	Conference	\$75
	Workshop	\$100
	Total	\$175
If you are a student attending the conference and workshop.	Conference	\$15
	Workshop	\$15
	Total	\$30



DISASTER RECOVERY INFORMATION EXCHANGE CENTRAL CHAPTER

Registration

Online Registration	<p>For online registration and payment options please click on the following links or copy and paste this link into the address line of your internet browser.</p> <p>To help us with membership organization and conference planning this year we ask that you complete two separate forms one for membership renewal or to submit a new application and another to sign up for both the Conference and Workshop.</p> <p>To complete your Membership Renewal or become a New Member for the November 1, 2008 to October 31, 2009 membership year, go to:</p> <p>https://ssl49.pair.com/echapter/Register/DRIEMBNewMembExpRegStg1V1.html</p> <p>To sign up for the Conference, go to:</p> <p>https://ssl49.pair.com/echapter/Register/DRIEMBNewMembExpRegStg1V1.html</p>
Payment Options	Cheque or Visa & MasterCard (via the online registration only)
Registration Questions?	Please contact: Brock Holowachuk president@driecentral.org
Note	You are not fully registered until your payment has been received!
Hotel Reservations and information	Canad Inns Polo Park 1405 St. Matthews Avenue Telephone: (204) 775-8791 http://www.canadinns.com
	Provide workshop and conference name and date for special discounted room rate.